

# Climate Change Facts

Tom Moser  
“The Right Climate Change” (founder)  
October 2022

# OVERVIEW of the FACTS

## Reference

- **“Human produced carbon dioxide is not causing the climate to change.”** 3
- **The global temperatures and CO2 levels have been changing between extremes for millions of years!** 5-12
- **0.3% scientists (not 97%) believe humans are causing climate change!** 13-19
- **The amount of human produced CO2 in the atmosphere is negligible!** 20-23
- **Increased CO2 is not causing weather extremes!** 24-30
- **CO2 is safe, good and not a pollutant!** 31-35
- **“Human produced CO2 is causing climate change” is political!** 36

# Ex-NASA Scientists' Assessment

- **Over 12 Years Of Extensive Climate Study.**
- **“The Right Climate Stuff” Team’s Motto Is “In God We Trust”, All Others Bring Data!”**
- **Physicist's, Chemists, Engineers, Astrophysicists, Mathematicians, Geologists and Meteorologist's; Many PhD's, An Unusually Objective, Interdisciplinary Team.**
- **Retired, So Not Beholding To NASA or The Administration.**
- **All Non-Paid Volunteers & Not Working For “Big Oil”, Big Anything.**
- **Willing To Risk Impeccable Reputations.**
- **Non-Political.**
- **A Team That Invites Input From Experts On All Sides Of The Issues.**
- **Website Address: [therightclimatestuff.com](http://therightclimatestuff.com)**



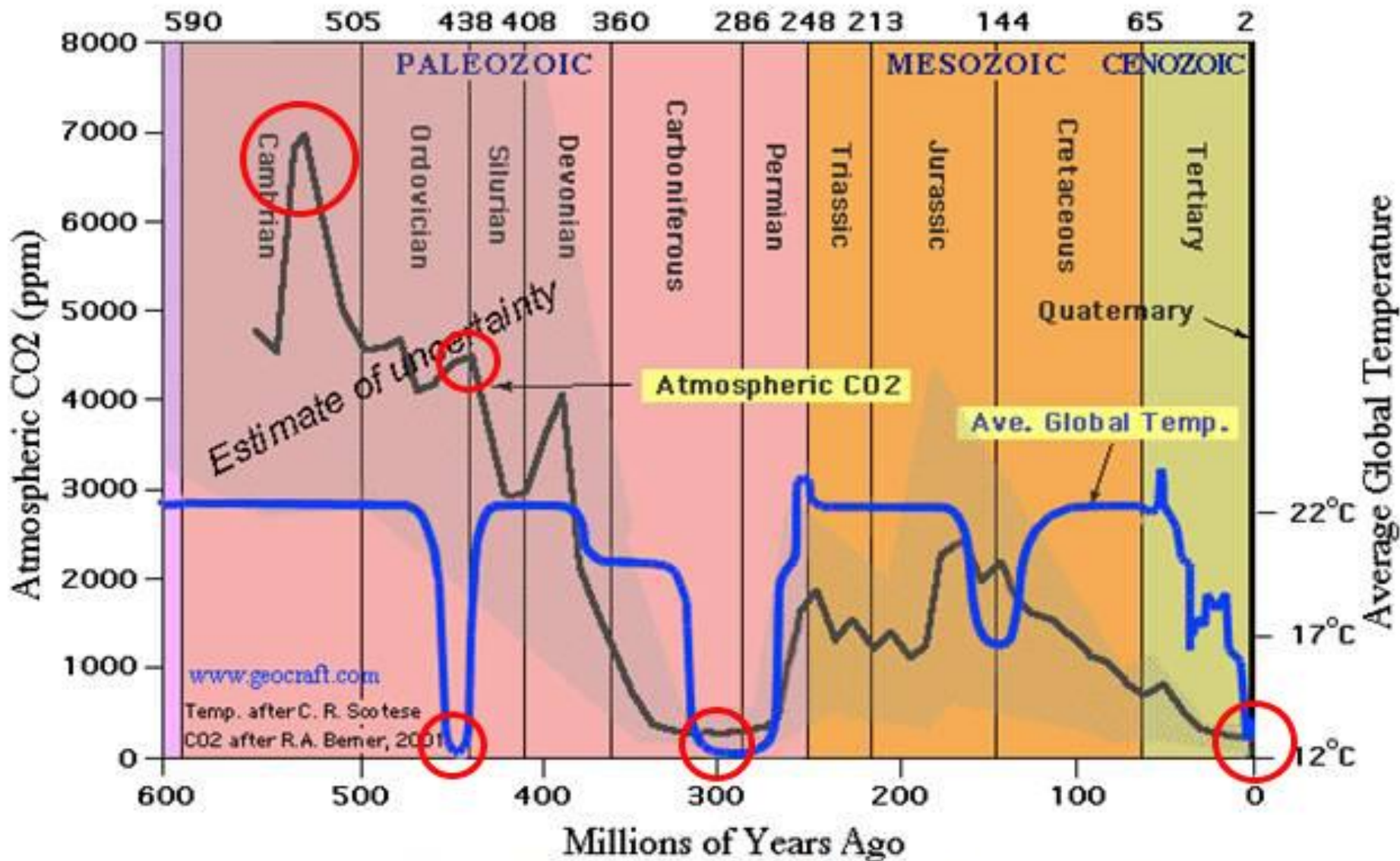
WINSTON CHURCHILL  
SAGE ADVICE

— ■ —

*“The farther  
backward you  
look, the  
farther forward  
you are likely  
to see.”*

— ■ —

# Global Temperature and Atmospheric CO2 over Geologic Time



*The global temp and CO2 has been changing for 600 million years. Look where we are today compared to where we have been.*

# Global Temperature

*Let's look at how the global temperature has varied significantly and constantly for hundreds of thousands of years.*

# Many factors determine global temperature

**SUN'S HEAT**

**SUN'S MAGNETISM**

**EARTH'S TILT**

**EARTH'S WOBBLE**

**VOLCANISM**

**METHANE**

**OZONE**

**ATMOSPHERIC CIRCULATION**

**COSMIC RAYS**

**OCEAN CURRENTS**

**ORBITAL ECCENTRICITY**

**ELEVATION OF LAND MASSES**

**WATER VAPOR**

**CARBON DIOXIDE**

**FAUNA AND FLORA**

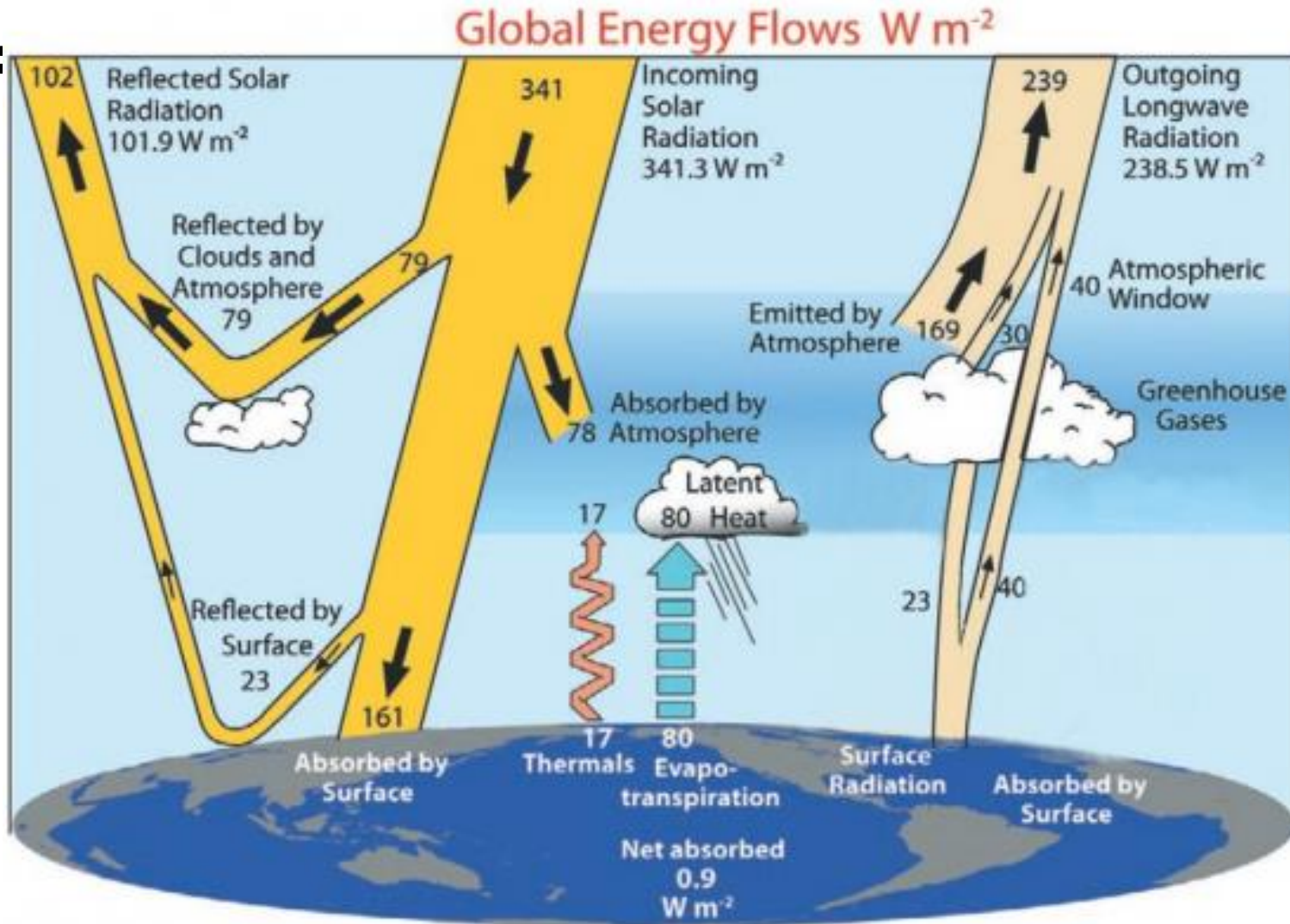
**NITROS OXIDE**

**AEROSOLS**

*Global temperature is the result of many complex variables. The predominant factor is solar radiation.*



# Elements Affecting Global Temperature

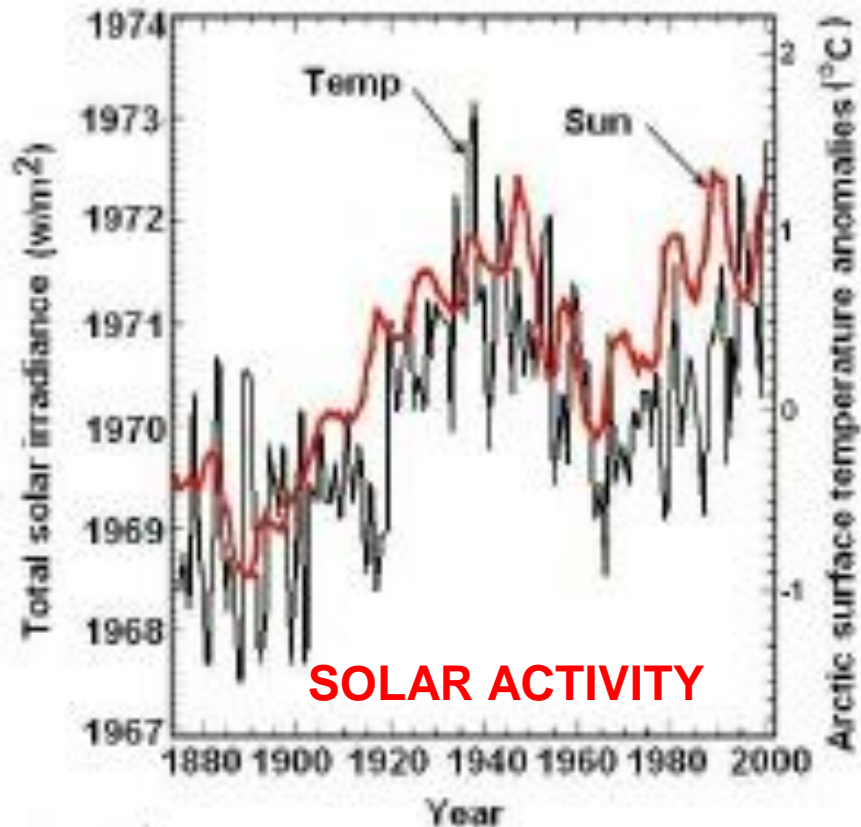


*Energy is balanced between that entering and leaving the atmosphere. Greenhouse gases cause some of the heat to be temporarily “trapped”.*

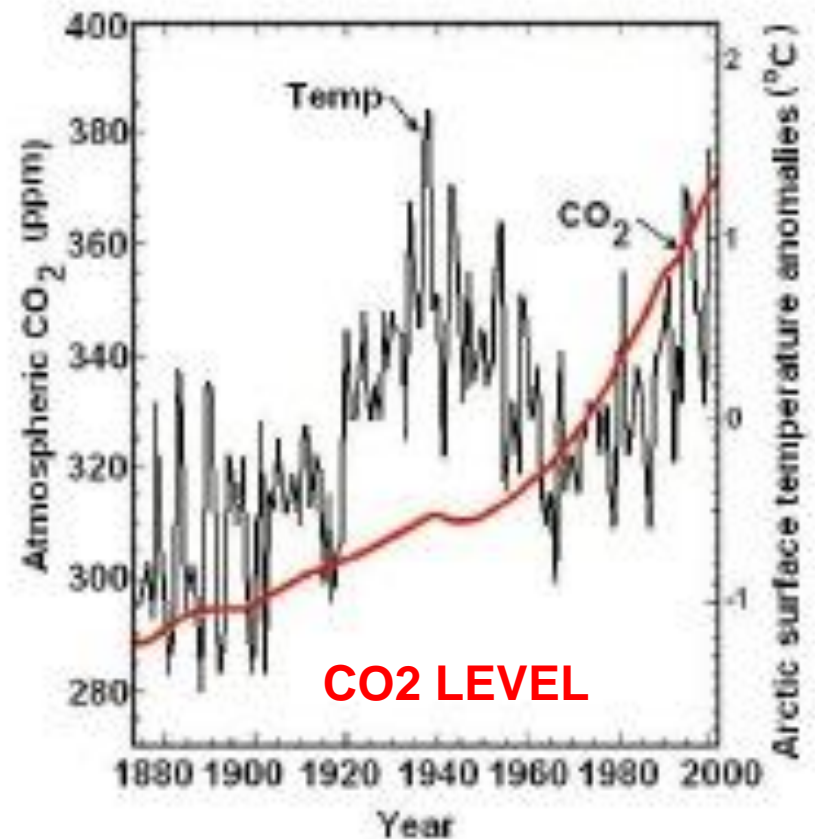


# TEMPERATURE CORRELATES WITH WHAT?

Solar Irradiance and temperature



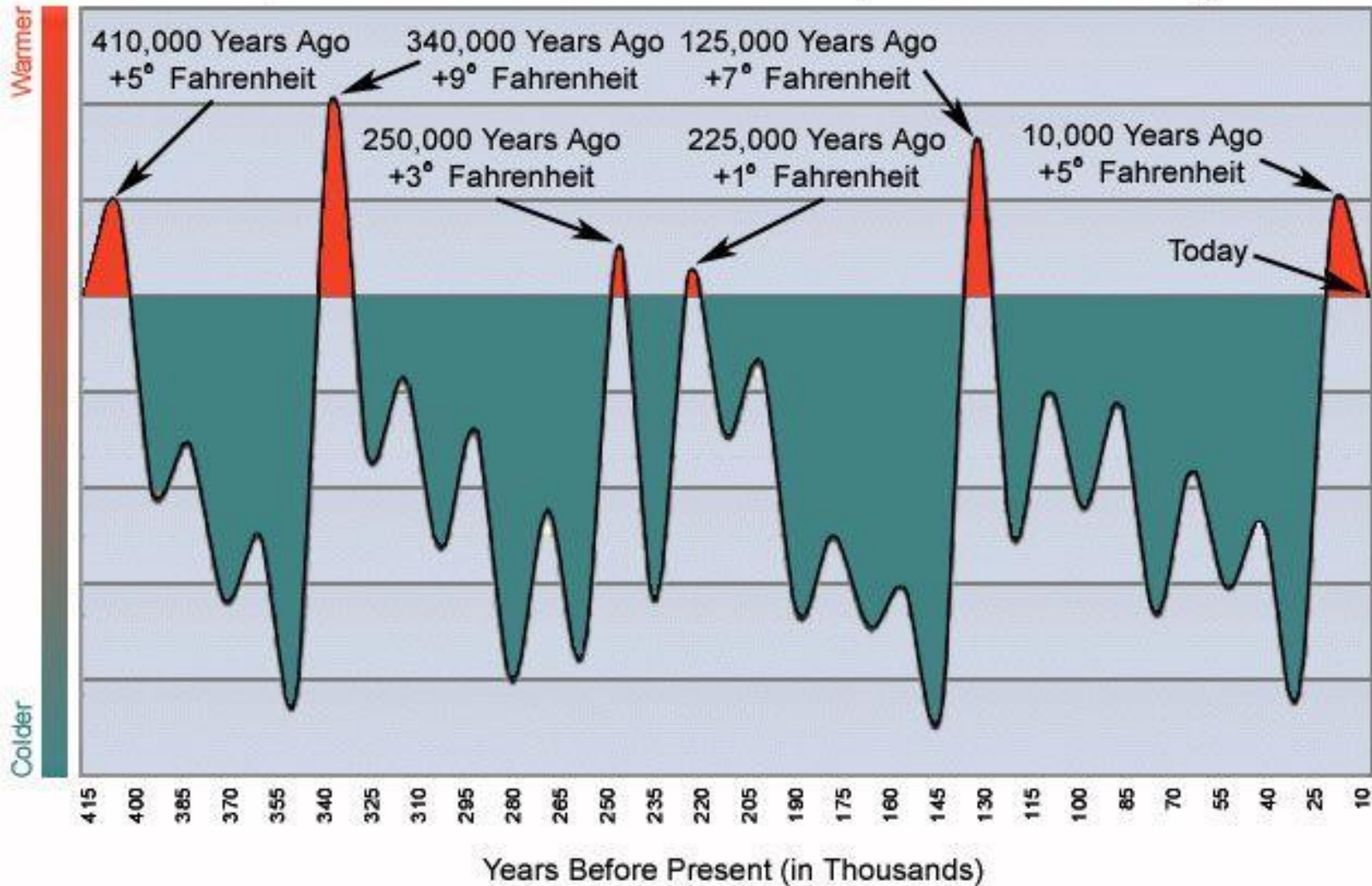
CO<sub>2</sub> and temperature



Modified from Soon, 2004

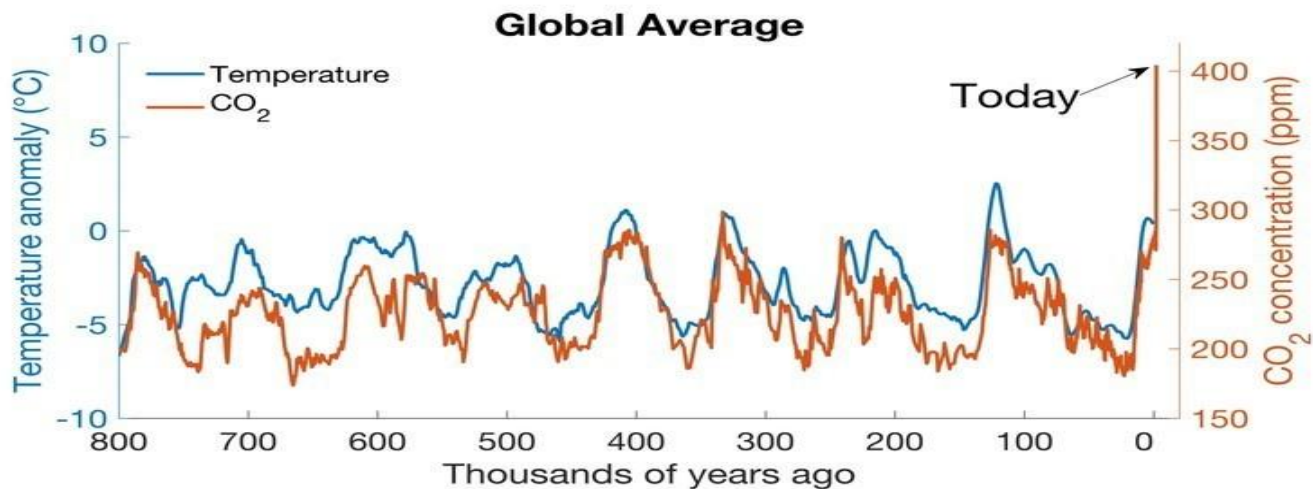
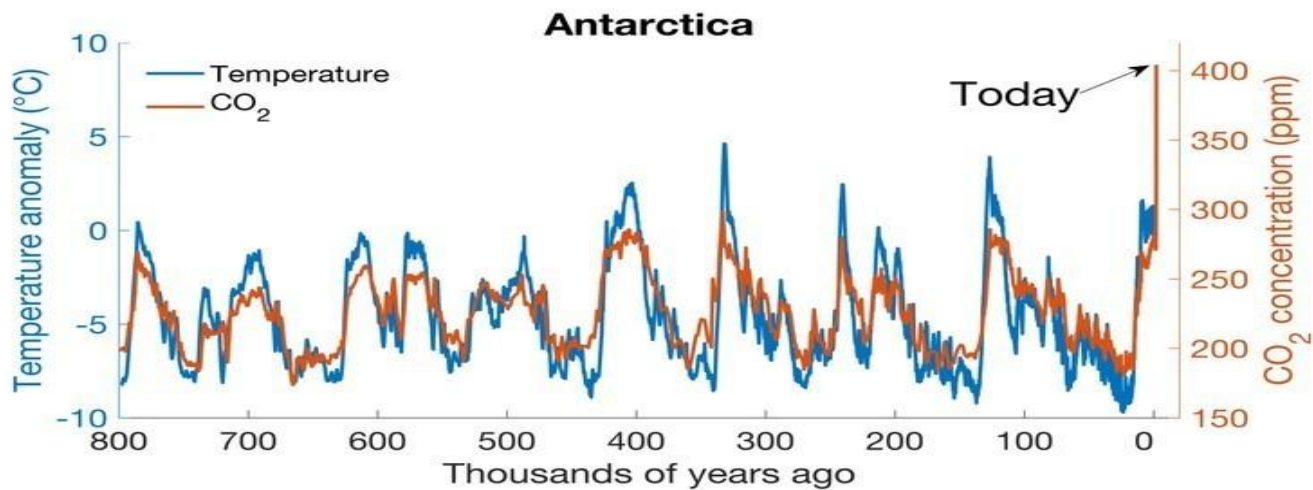
*Global temperatures vary extensively and correlates with solar energy , not CO<sub>2</sub> levels.*

# 415,000 Years of Global Temperature Change



***The global temperature has gone through extreme HOT and COLD cycles approximately every 150,000 years. Currently we are in an ideal condition.***

# Temperatures & CO<sub>2</sub> Determined from Ice Core Data

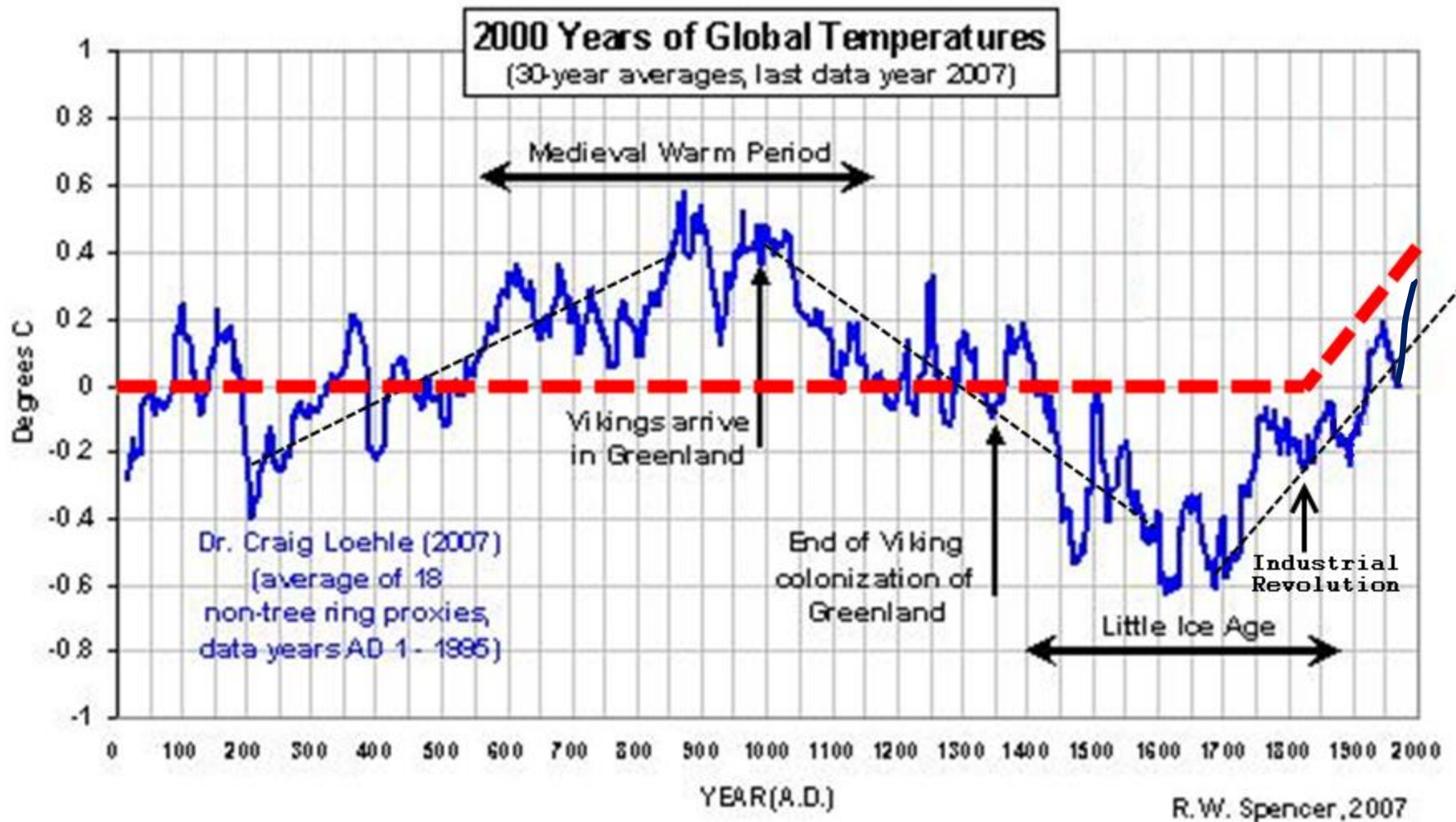


@benhenley, @dr\_nerilie

**Measured temperatures and CO<sub>2</sub> has varied significantly for 800,000 yrs.**



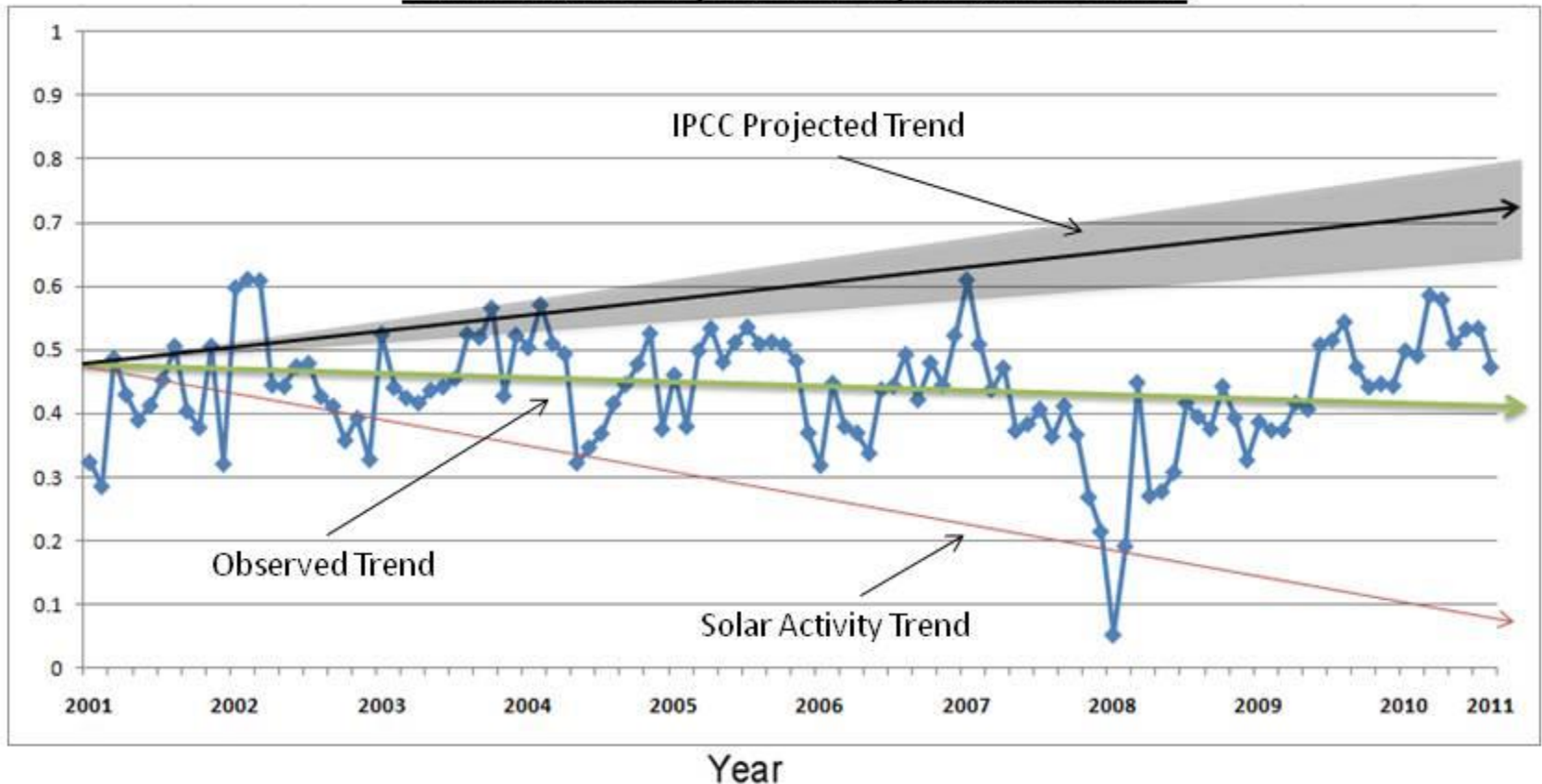
# Last 2000 Years



***The global temperature is less than it was 500 years ago***

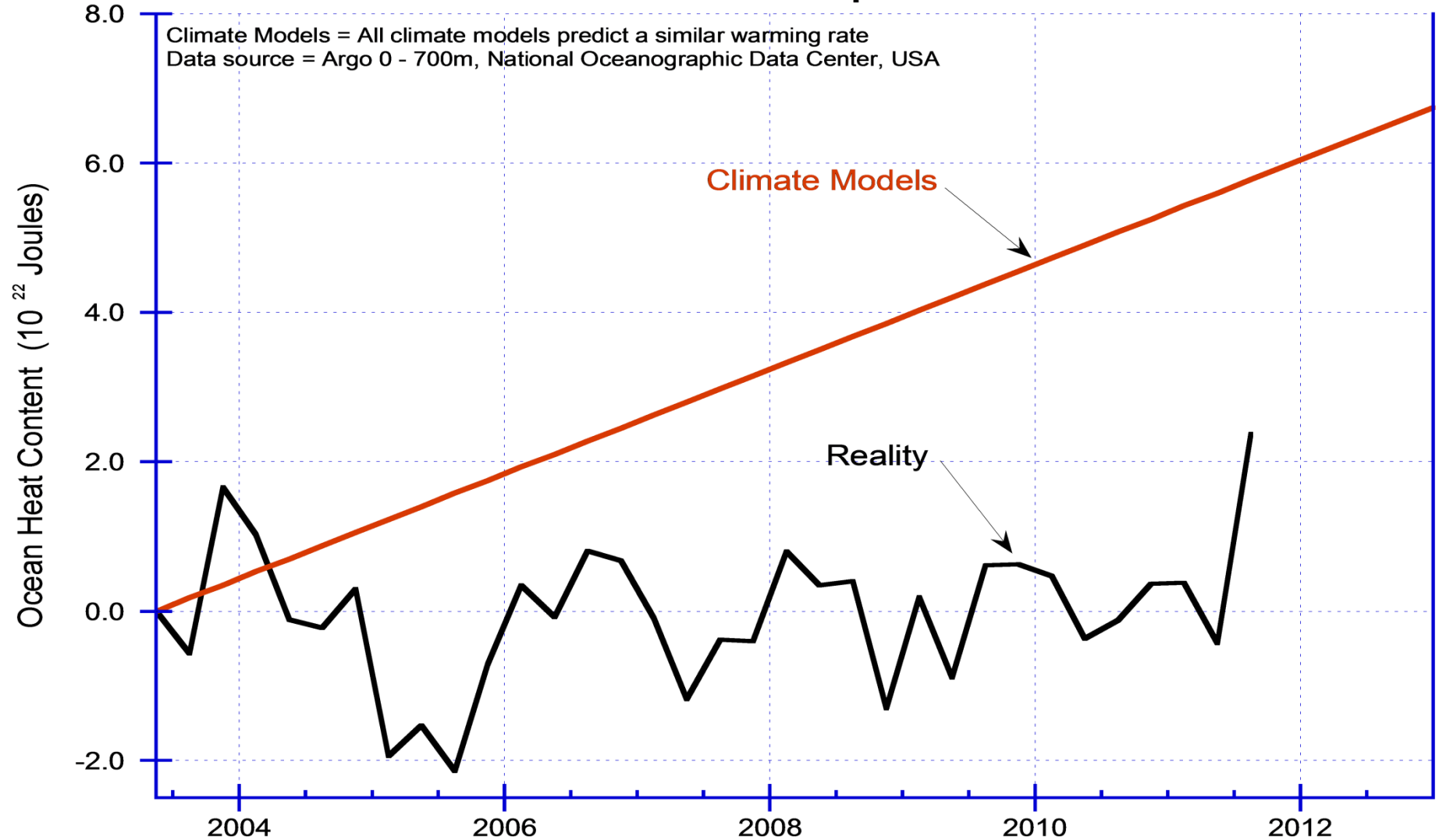
# Scientific Analyses Compared to Empirical Data

## Observed & Projected Temperature Trends



Global average surface temperature anomalies January 2001 through May 2009; observed (CRUT3) and projected (IPCC A1B). This clearly demonstrates the inability of the IPCC modelers to accurately project temperatures one decade in advance much less to the end of the century. The modelers respond that some natural phenomena is temporarily overpowering CO2's influence. Temporarily? The phenomena are a well documented, recurring shift in a Pacific Ocean current and a very low level of sunspot and magnetic activity within the sun, neither of which are unprecedented.

## Climate Models vs Argo Data Global Ocean Temperature



The ocean temperature has been basically flat since we started measuring it properly with 3,300 ocean buoys and NOT warming quickly as climate models predict.



# “97% of scientist agree” is 100% incorrect

## 0.3% consensus, not 97.1%

“The scientific consensus that human activity is very likely causing most of the current GW (global warming)” – Cook et al (2013)

11,944 abstracts (1991-2011) reviewed	100%
7,930 were arbitrarily excluded for expressing <u>no opinion</u>	66.4%
3,896 were marked as agreeing we cause <u>some</u> warming	32.6%
64 were marked as stating we caused most of the warming	0.5%
41 actually stated we caused most warming since 1950	0.3%
0 were marked as endorsing man-made catastrophe	0.0%

*Legates et al 2015 (after Monckton)*

***An objective assessment of the same 11,944 papers two years later showed that only 41 authors (0.3%) stated explicitly that human produced CO2 caused global warming.***

# 1971 Scientific Prediction

- In 1971, global cooling was the climate threat du jour. German meteorologist Dr. Martin Rodewald predicted that if this weather pattern continued, Europe “would be covered with the glaciers of a new ice age by the turn of the century.”
- Scientists have a horrible record when it comes to making climate change predictions. Whether it was global cooling in the 1970s or the current warning of global warming,
- The only consistency about climate science is its inconsistency. It’s time to stop treating it like it is an absolute truth. If they were wrong before, there’s nothing to suggest they will not be wrong again.

# Scientific Analyses Conclusion

- Empirical evidence indicates the IPCC claims and analyses are flawed.
- The “Science is settled” is not true.  
(0.3% scientists (not 97%) believe humans are causing climate change)
- CO<sub>2</sub> is not a significant cause of climate change.

# **Carbon Dioxide in the Atmosphere**

# Volcanic Effects on CO2

- **The volcano Mt Pinatubo erupted in the Philippines in 1991, it spewed out more greenhouse gases into the atmosphere in one year than the entire human race had emitted in all its years on earth.**

(Source: Dr. Ian Rutherford Plimer Australian professor emeritus of earth sciences, University of Melbourne)

# Greenhouse Gases

(Dr. Wallace Becker, Columbia Univ.)

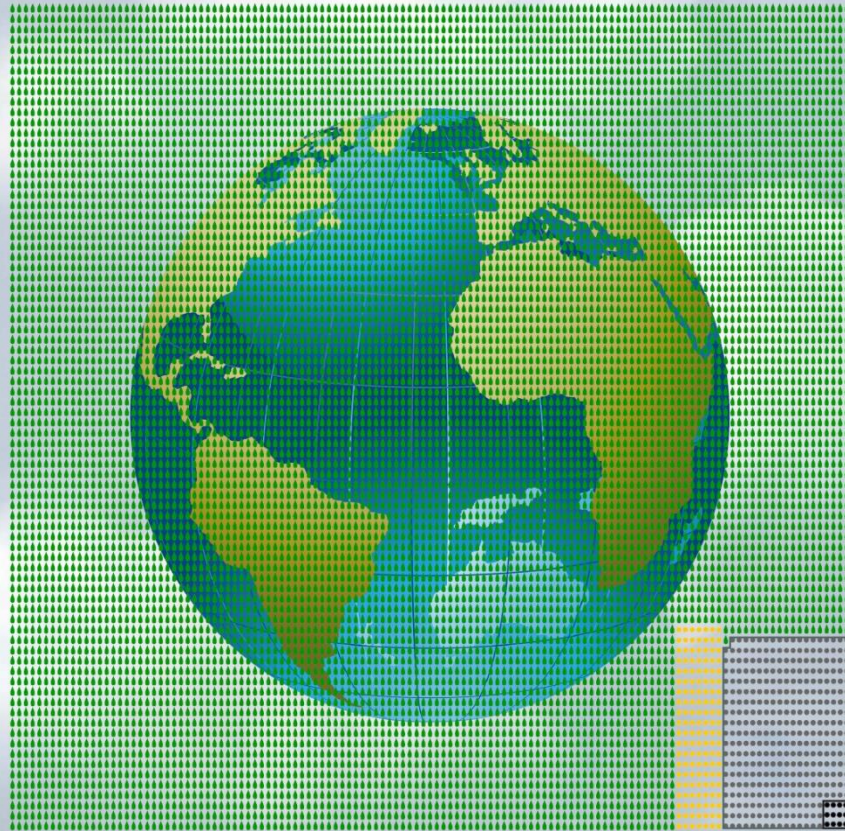
Atmosphere Components	% of Greenhouse Effect	% Natural	% Man-made
Water vapor	95.000 %	94.999%	0.001 %
Carbon Dioxide (CO <sub>2</sub> )	3.618 %	3.502 %	0.117 %
Methane (CH <sub>4</sub> )	0.360 %	0.294 %	0.066 %
Nitrous Oxide (N <sub>2</sub> O)	0.950 %	0.903 %	0.047 %
Misc. gases (CFC's, etc.)	0.072 %	0.025 %	0.047 %
Total	100.000 %	99.72 %	0.28 %

***Human produced CO<sub>2</sub> is 0.117% of the atmosphere (approximately one tenth of one percent), an insignificant amount.***



**WATER VAPOR IS EARTH'S PREDOMINANT GREENHOUSE GAS  
MAN-MADE CARBON DIOXIDE HAS NEGLIGIBLE IMPACT ON EARTH'S TEMPERATURE**

THE 10,000 SYMBOLS (DROPLETS AND DOTS) REPRESENT THE PROPORTIONAL PRESENCE OF ALL GASES IN EARTH'S GREENHOUSE ENVELOPE



DATA SOURCE: [http://www.geocraft.com/WVFossils/greenhouse\\_data.html](http://www.geocraft.com/WVFossils/greenhouse_data.html)

- 💧 WATER VAPOR...9500 GREEN DROPLETS **95%\***
  - CARBON DIOXIDE (CO<sub>2</sub>): **3.6%\***
    - NATURALLY OCCURRING CO<sub>2</sub>...348 GRAY DOTS **3.48%\***
    - MAN MADE CO<sub>2</sub>...12 BLACK DOTS **0.12%\***
  - NITROUS OXIDE, METHANE, MISC...140 YELLOW DOTS **1.4%\***
- \*PERCENTAGE OF EARTH'S TOTAL GREENHOUSE ENVELOPE**

**MAN MADE  
CO<sub>2</sub>**

*Shown here, the atmosphere is represented by 10,000 dots. Water vapor is represented by 9,500 dots. In the lower right hand corner are 300 dots which represent the total CO<sub>2</sub> in the atmosphere. Of the 300, 12 represent that which is man made.*

**CO<sub>2</sub> IS NOT A SIGNICANT CAUSE OF CLIMATE CHANGE**

NATURALLY OCCURRING WATER VAPOR IS EARTH'S PREDOMINANT GREENHOUSE GAS, BENEFICIALLY RETAINING THE SUN'S RADIANT HEAT SO THAT PLANT, ANIMAL, AND HUMAN LIFE CAN FLOURISH. WITHOUT WATER VAPOR, OUR EARTH WOULD FREEZE OVER, MAKING PLANET EARTH UNINHABITABLE.

CARBON DIOXIDE PLAYS A SMALL ROLE IN RETAINING THE SUN'S HEAT. 96.6% OF ATMOSPHERIC CO<sub>2</sub> IS PRODUCED BY NATURE AS REPRESENTED BY THE 348 GRAY DOTS. MAN'S ADDITION TO THE TOTAL AMOUNT OF CO<sub>2</sub> IS NEGLIGIBLE, AS REPRESENTED BY THE 12 BLACK DOTS.

THE GOAL OF GLOBAL WARMING ALARMISTS IS TO REDUCE CO<sub>2</sub> EMISSIONS SO THAT OVER DECADES OF TIME THESE 12 DOTS MIGHT BE DECREASED TO PERHAPS 8 OR 9 DOTS.

**REDUCING MAN MADE CO<sub>2</sub> WILL HAVE NO MEASURABLE EFFECT ON EARTH'S TEMPERATURE READINGS.**



# **Weather Related Events**

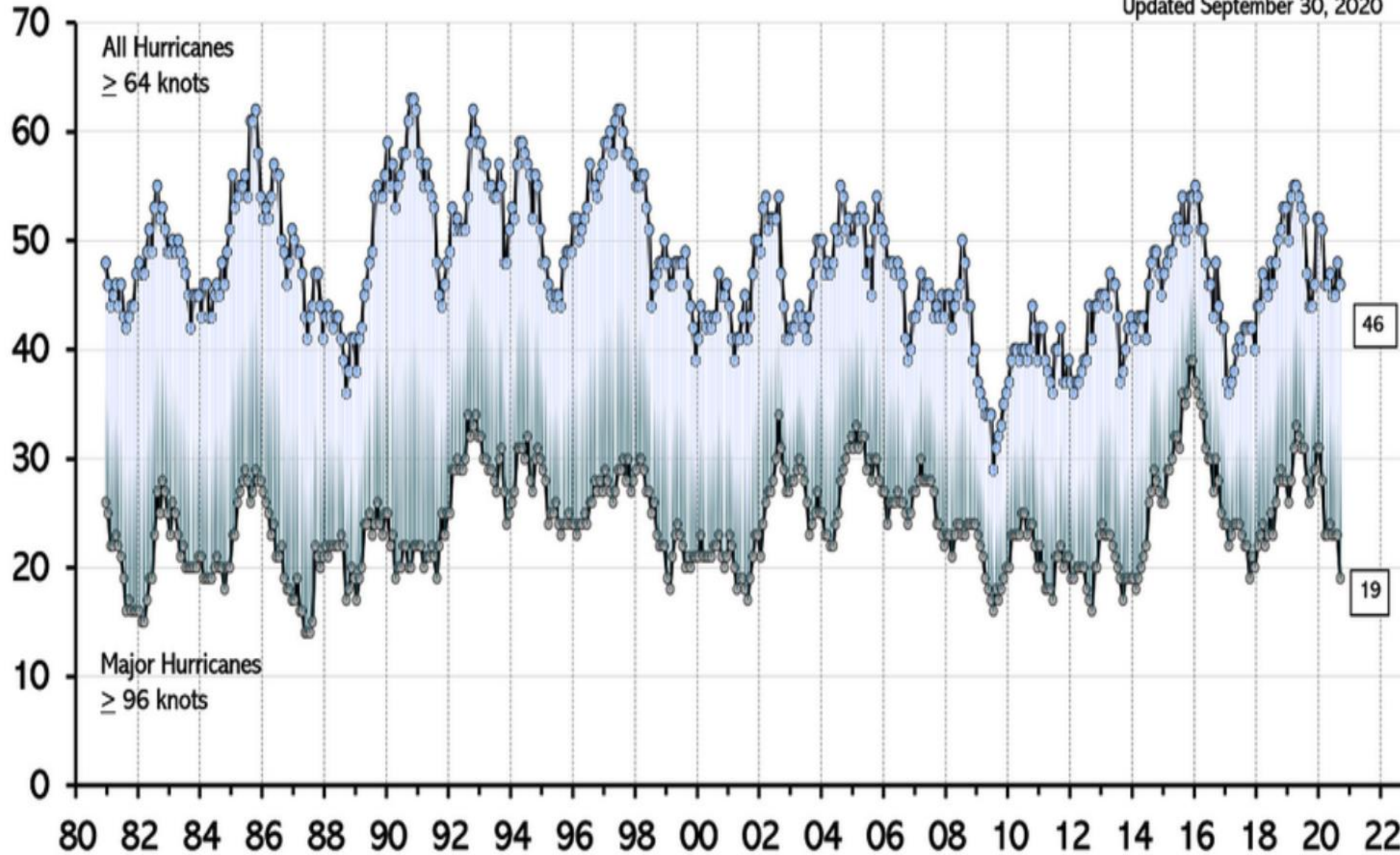
# Weather Extremes

- Is Increased CO<sub>2</sub> Causing Extreme Weather?
  - Major Hurricanes
  - Violent Tornadoes
  - Floods
  - Droughts
  - Wildfires
- Let's Look at the data!

# Global Major Hurricane Frequency – 12 month running sums

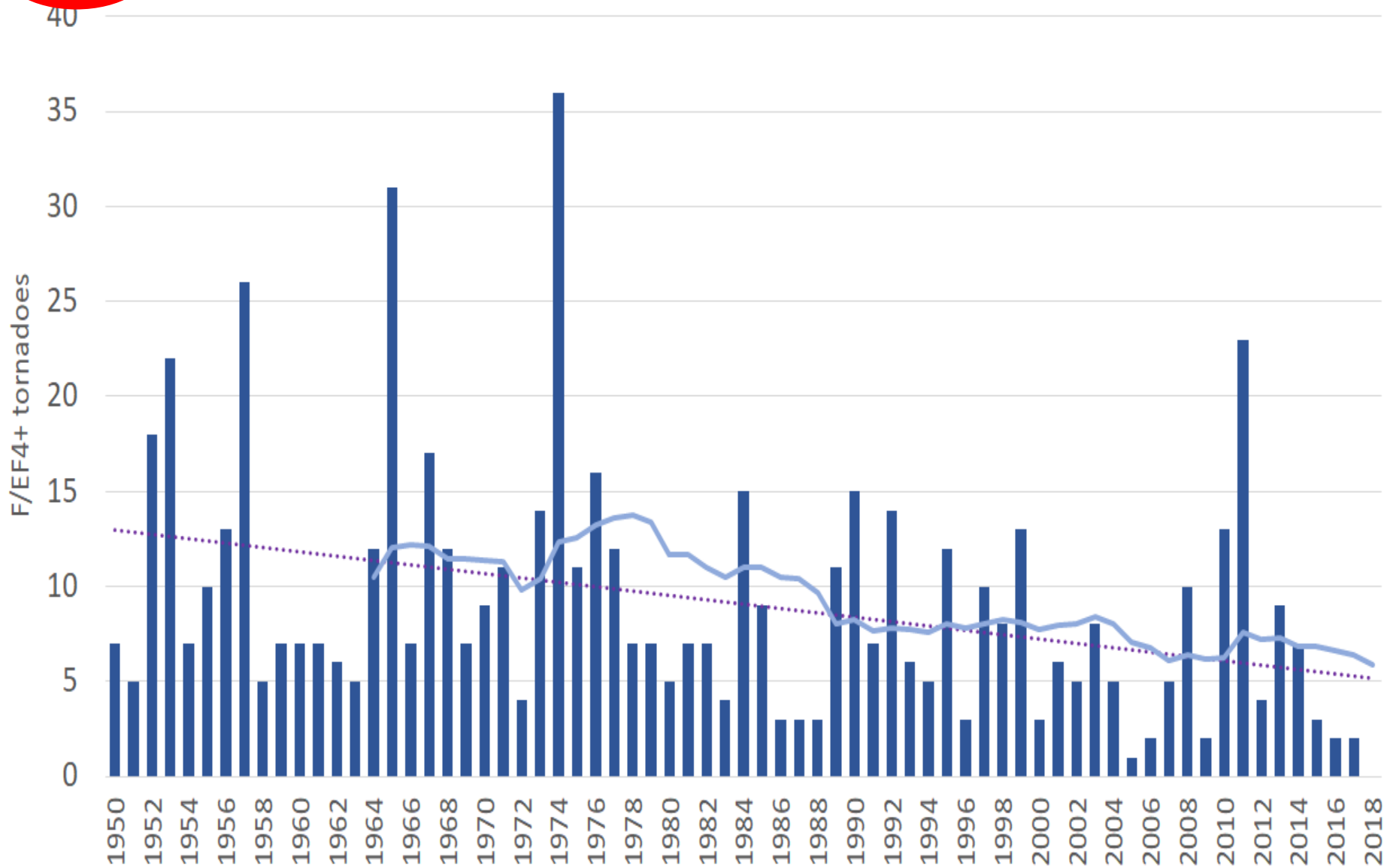
Dr. Ryan N. Maue

Updated September 30, 2020



***All Hurricanes and Major Hurricanes, for 42 years, have shown no increasing trend.***

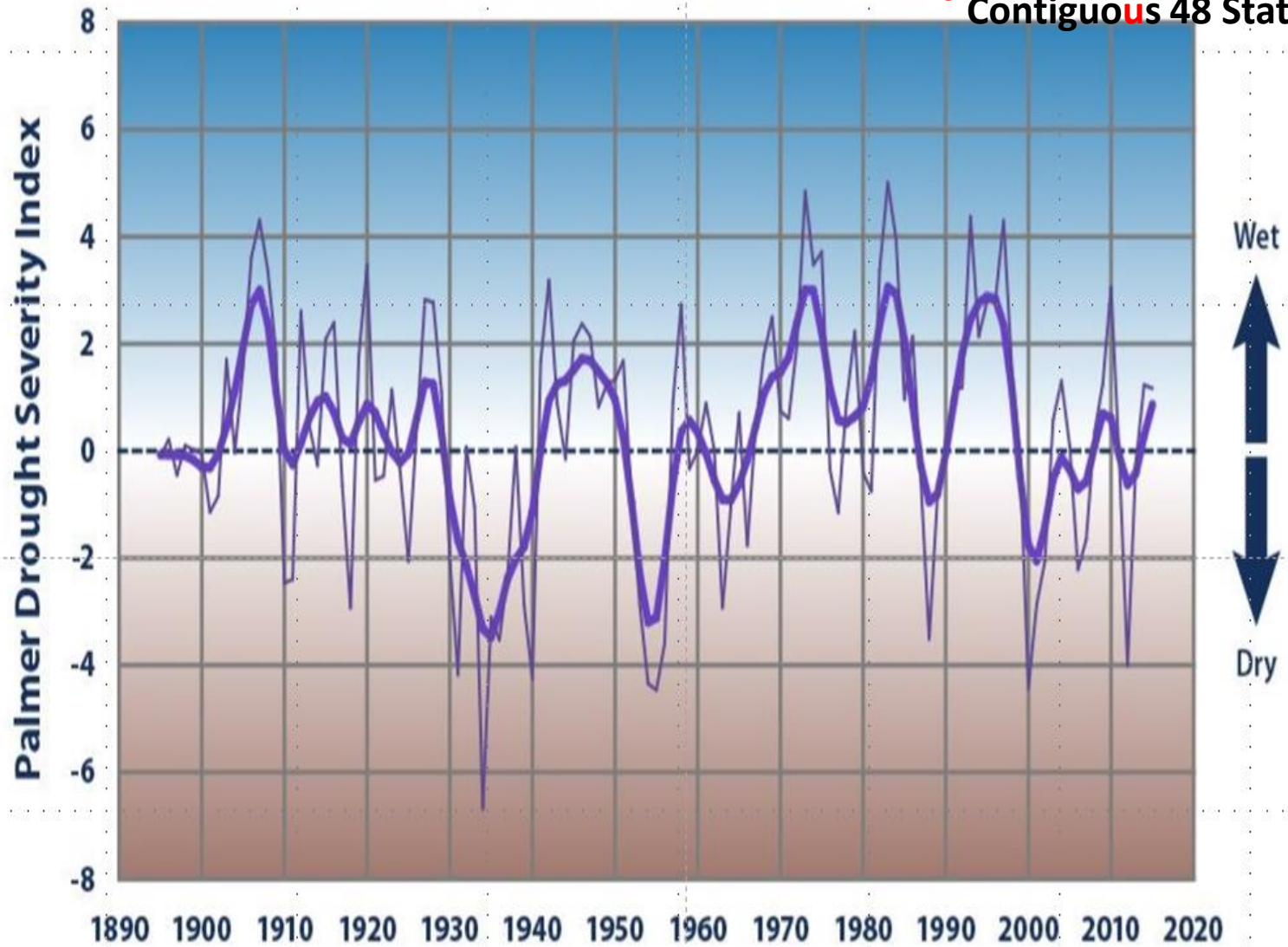
# Violent tornadoes in the United States since 1950



***The trend for the number of violent tornadoes, for the past 70 years, is decreasing.***

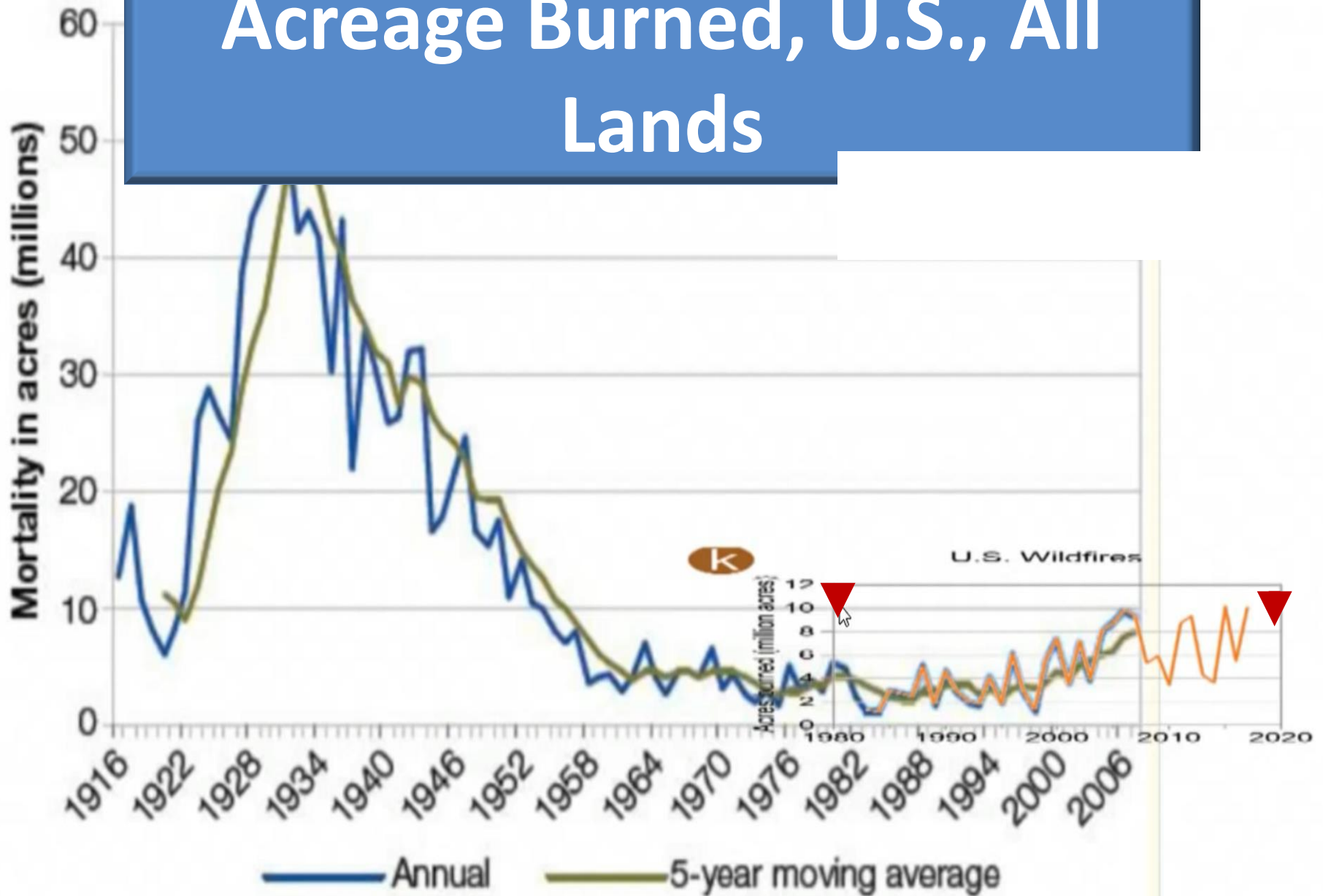
# Via EPA, no long-term trends in US\* drought

\* Contiguous 48 States



*The trend of droughts has not increased..*

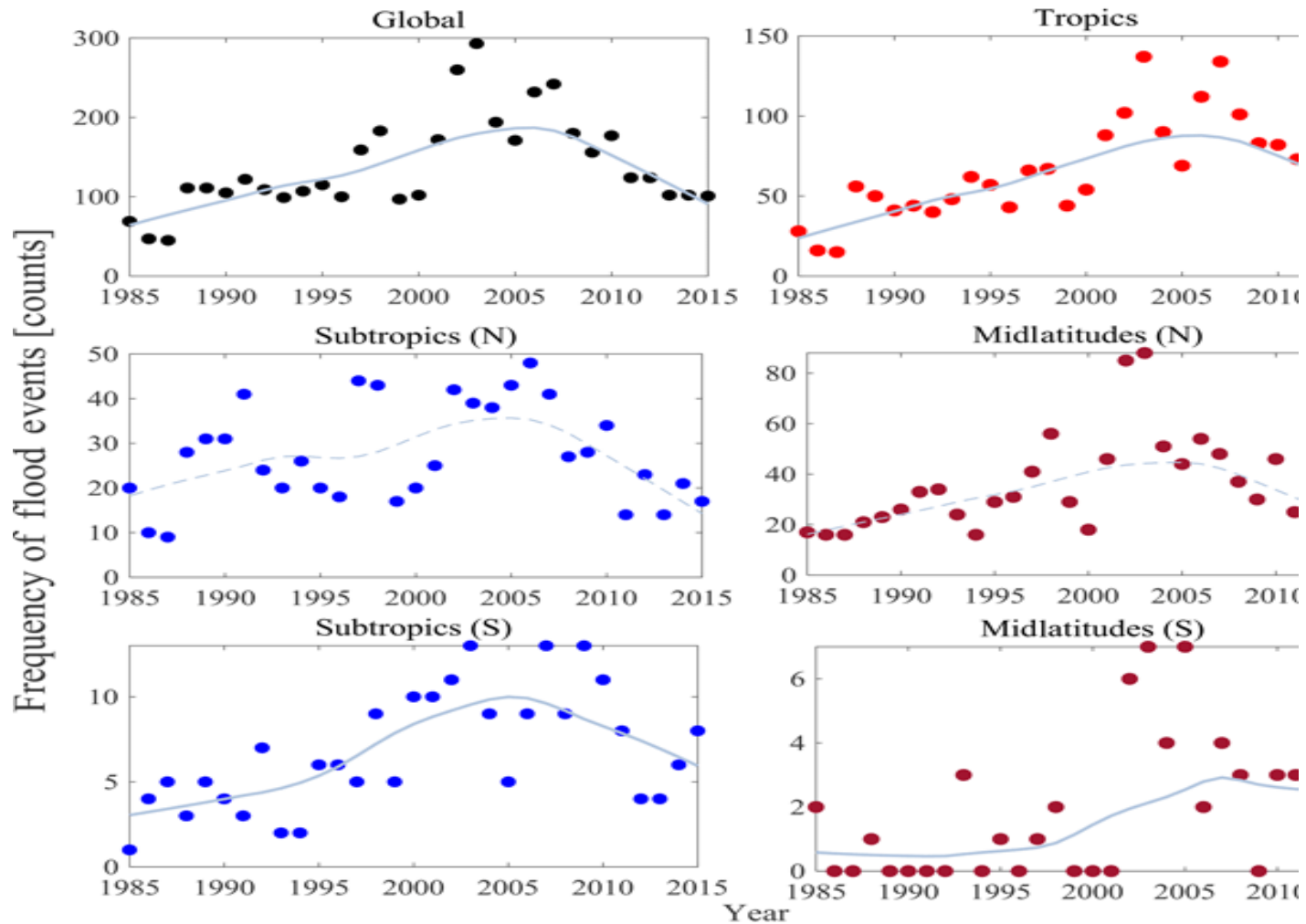
# Acres Burned, U.S., All Lands



Source: USDA Forest Service, Forest Health Protection

*The trend has been down for 90 years for acres burned.*

# Frequency of flood events



*Global and regional flooding events have decreased.*



**Carbon Dioxide is  
Good**



**Dr. Sherwood Idso, Research Physicist, U.S. Department of Agriculture's Research service - U.S. Water Conservation Service laboratory in Phoenix, Arizona, demonstrates the effect increased CO<sub>2</sub> from ambient to doubling the amount. Imagine Earth's forests in a CO<sub>2</sub> enriched future.**

# The Effect on Production by Doubling CO<sub>2</sub>

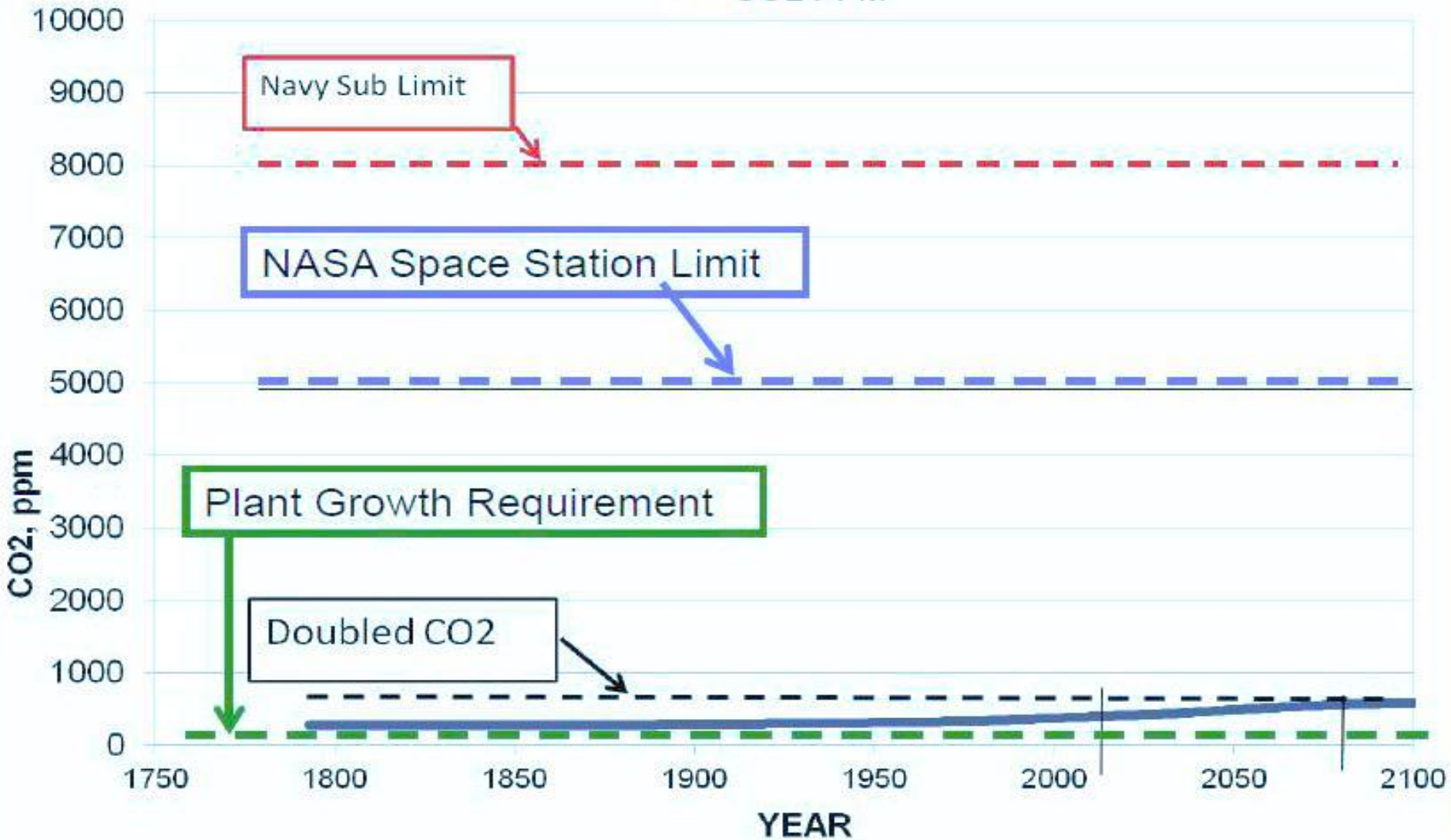
	Mean % Increase	Number of Studies		Mean % Increase	Number of Studies
Grains			Fruits		
<u>Barley</u>	41.5	15	Cantaloupe	4.7	3
<u>Rice</u>	34.3	137	Sweet Cherries	59.8	8
<u>Wheat</u>	33	214	Strawberries	42.8	4
	Average: 36.3%		Tomatoes	31.9	35
Vegetables			Average: 32.8%		
Green Beans	64.3	17	Trees		
<u>Soybeans</u>	47.6	162	Black Cottonwood	124	5
<u>White potatoes</u>	29.5	33	Red Maple	44.2	13
<u>Sweet potatoes</u>	33.7	6	Northern Red Oak	53.3	7
<u>Corn</u>	21.3	20	Loblolly Pine	61.9	65
<u>Cassava</u>	73.5	2	Average: 70.8%		
	Average: 45.7%		Total studies 746		

— = One of eight most consumed food crops in the world. Average increase 39.3%

***Based on 746 studies: Significant increase in all crops by doubling CO<sub>2</sub>.***

# CO2 ATMOSPHERIC CONCENTRATION, PPM

— CO2 PPM



**High concentration of CO2 is safe for humans in Navy subs and Space Station.** Hal Doiron

# CO<sub>2</sub> Is Not A Pollutant!

- CO<sub>2</sub> Is In Our Every Breath – 400 ppm Inhaled & 40,000 ppm Exhaled
- US Navy allows 8,000 ppm for 90 Days
- NASA Allows 5,000 ppm for Three Years!
- Victims needing CPR Get 40,000 ppm For Up to an Hour – No Ill Effects
- Not enough fossil fuels left to raise CO<sub>2</sub> level to thousands of ppms.
- CO<sub>2</sub> is Not a Pollutant!



# Who Could Be Motivated To Promote Man-Made Global Warming?

- Progressives – One world society and redistribution of wealth.
- Foreign Countries – Financial aide to reduce CO2.
- Wall Street – \$ Billions In Commissions
- Green Industries - \$ Billions In Profits
- Academia – Funded with grants to prove AGW.
- Environmental Extremists Groups – It's a religion.
- Media – The public “buys” catastrophic stories.